

# Electric Strikes

## GK600 Series

Durable Strikes for Residential and Business



**GK600**

**GK610**

**GK620**

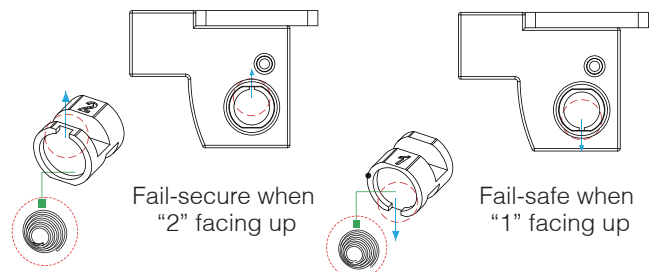
The GK600 series electric strike is designed for use with European mortise locks. It can be installed in metal and wood door frames and is field reversible for fail-safe or fail-secure operation. Available with 3 models with different types of faceplates for various applications.

### Standard Features

- 12 or 24 VDC
- Current Draw: 250mA/12VDC; 150mA/24VDC
- Accommodates 10 mm latchbolt
- Field reversible fail-safe or fail-secure
- Brushed stainless steel finish
- Zinc alloy construction
- Non-handed fully reversible
- Endurance 1,000,000 cycles

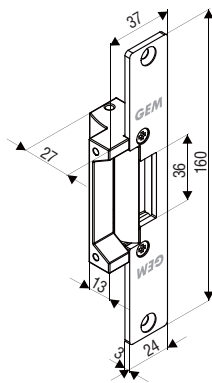
### Changing Fail-Safe / Fail-Secure

Fail-safe or fail-secure is field reversible by reversing the round screw.

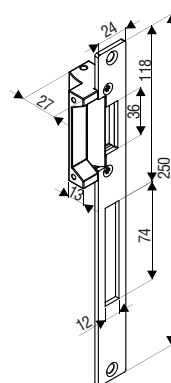


### Dimensions

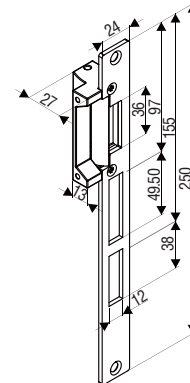
GK600



GK610



GK620



All dimensions in mm

### Warranty

The product is warranted against defects in material and workmanship while used in normal service for a period of 3 years from the date of sale to the original client. The GEM policy is one of continual development and improvement; therefore GEM reserves the right to change specifications without notice.