

# Electric Strike Installation Instructions

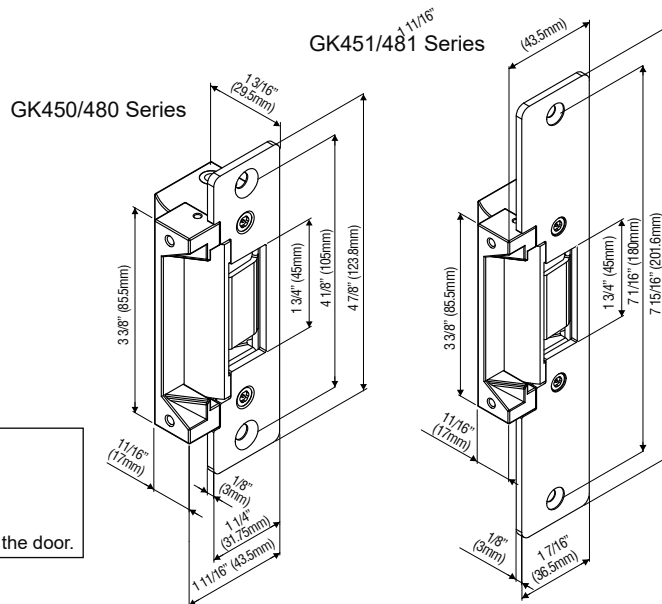
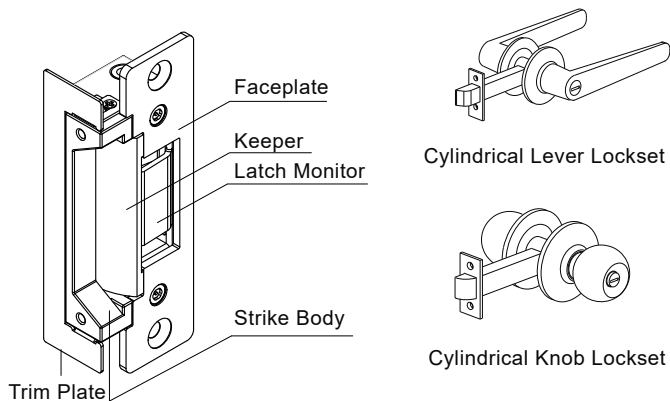
## GK450/480 Series

### Specifications The strike is polarity insensitive

GK450/480 series of electric strikes are designed for use with cylindrical and mortise locksets without deadbolt in hollow metal, aluminum and wood jambs. The strikes can be configured to fail-safe or fail-secure on site. Recommended for indoor use.

Operating Voltage	12/24VDC
Current Draw	Dual Voltage: 300mA/12VDC, 150mA/24VDC
Operating Temperature	For indoor use: + 14°F to + 120°F (-10°C to +49°C)
Humidity	0% to 85% Non-condensing
Latch Throw	GK450/451 series: 9/16" (15mm) GK480/481 series: 3/4" (19mm)
Keeper Width	1 3/4" (45mm)
Static Strength	1500 lbs (680Kg)
Dynamic Strength	70 ft-lbs
Endurance	250,000 cycles (UL tested) 1,000,000 cycles (Factory tested)
Performance Level	Destructive Attack: Level I Line Security: Level I Standby Power: Level I Endurance: Level IV

Model	Latch Monitor	Body Construction	Frame	Latch Throw
GK450	—	Zinc Alloy	Hollow Metal	9/16" (15mm)
GK450M	●	Stainless Steel		
GK450-ST	—		Zinc Alloy	
GK450M-ST	●	Wood		
GK451	—		Stainless Steel	
GK451M	●	Hollow Metal		
GK451-ST	—		Zinc Alloy	
GK451M-ST	●	Wood		
GK480	—		Stainless Steel	3/4" (19mm)
GK480M	●	Zinc Alloy		
GK480-ST	—		Stainless Steel	
GK480M-ST	●	Wood		
GK481	—		Zinc Alloy	
GK481M	●	Hollow Metal		
GK481-ST	—		Stainless Steel	
GK481M-ST	●	Wood		

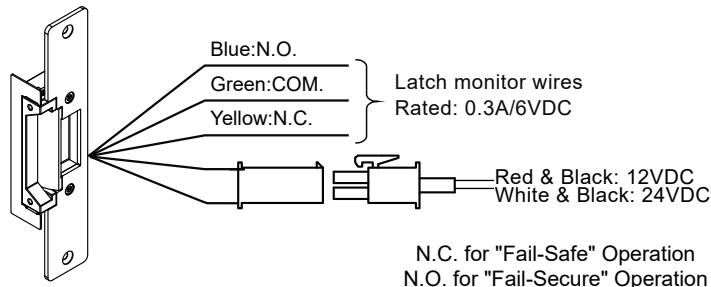


#### UL Requirements

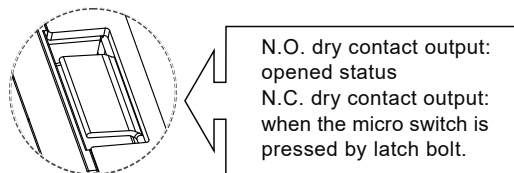
- Wiring methods shall be in accordance with NFPA70.
- The GK450/480 Series is intended to be used with UL Listed Exit Hardware.
- The GK450/480 Series shall not impair the intended operation of an emergency exit.
- The GK450/480 Series shall not impair the operation of panic hardware mounted on the door.

### Wiring Diagrams

#### Dual Voltage with Latch Monitoring

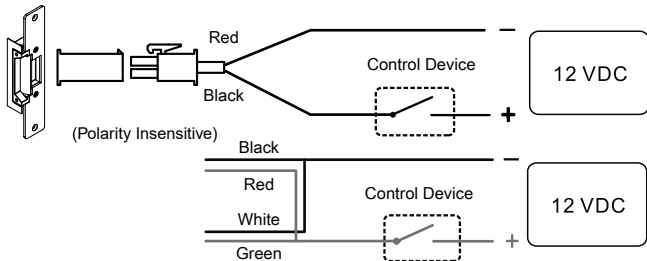


#### Latch Monitor

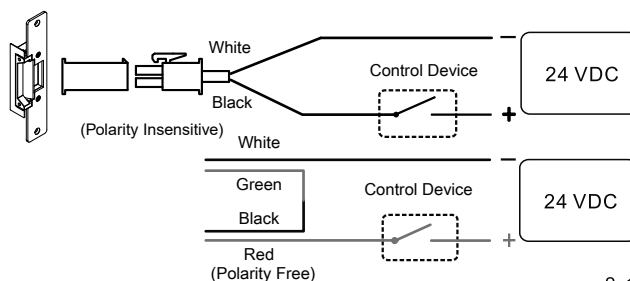


#### Dual Voltage (12V/24V)

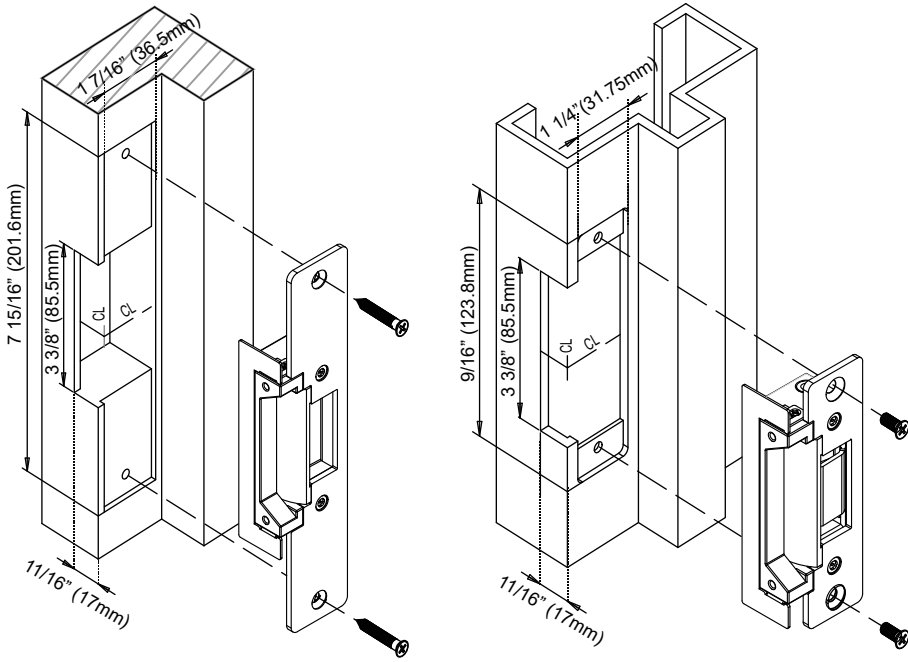
For 12VDC Operation:



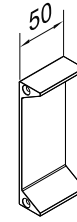
For 24VDC Operation:



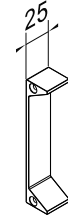
## Installing on Wood Frame and Hollow Metal Frame:



## Optional Lip Extension Brackets

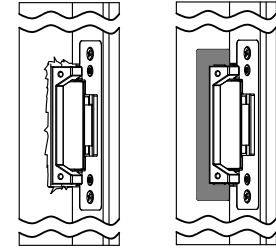


LP-050  
2" (50mm)



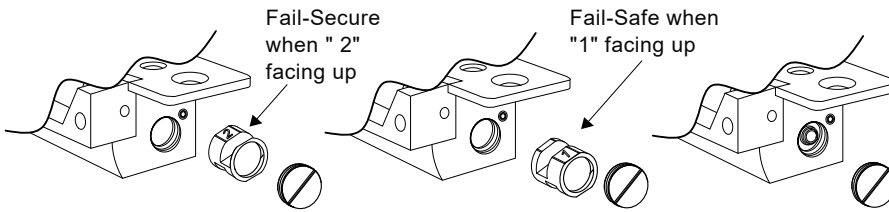
LP-025  
1" (25mm)

## Using the Trim Plate



In case of over-cutting, use the enclosed trim plate to cover up any errors.

## Fail-Secure / Fail-Safe Reversible



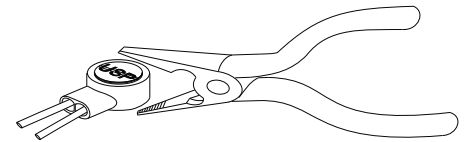
1. Remove the plug and take out the round screw.

2. Reverse the round screw.

3. Put back the round screw and plug.

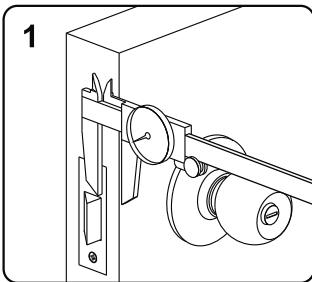
\*Factory default setting is Fail-Secure.

## Installing the Crimp Connectors

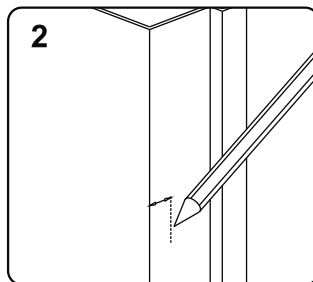


Place the wire inside the connector and use pliers to press down on the head of the connector evenly.

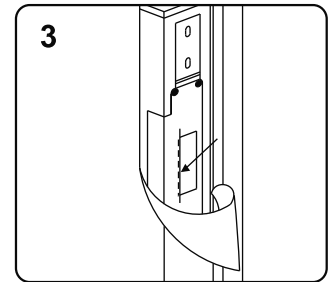
## Installation Instructions



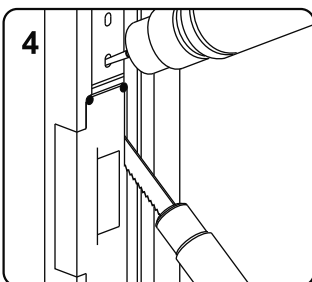
Measure the vertical and horizontal position of the latch bolt on the door leaf



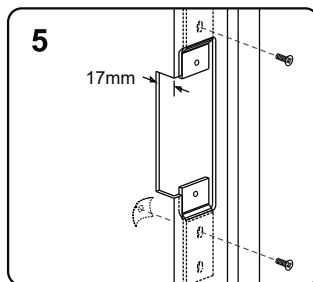
Mark the position of the latch bolt on the door frame as shown in figure



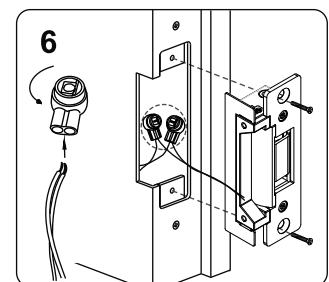
Align the installation template to the marked line



Drill the holes and cut the door frame as indicated by the template



Install the mounting tabs



Connect to the power and test the electric strike before finally mounting the unit



**Note**

Please ensure that there is no back pressure on the keeper from the latch. As with most strike this may cause the strike to bind and malfunction. It could also cause undo pressure on the solenoid and eventual failure of the strike.